

**Line of COBOT torches adapts perfectly to all the requirements of collaborative robots due to its low weight and functionality.**

Robust and light necks calibrated to maintain a stable TCP during the life of the torch, in addition to stainless steel structure that gives an excellent rigidity and avoids the increase of the temperature in the back areas of the neck, being able to be handled with greater ease, but always maintaining the precautions that a welding process requires.



**Welding process:**

MIG/MAG, GMAW, 131,135

Technical data according to IEC60974-7



Liquid



500 A - CO2 100%



400 A - Mix M21 (ISO 14175) 100%



Ø1.0-1.6 mm

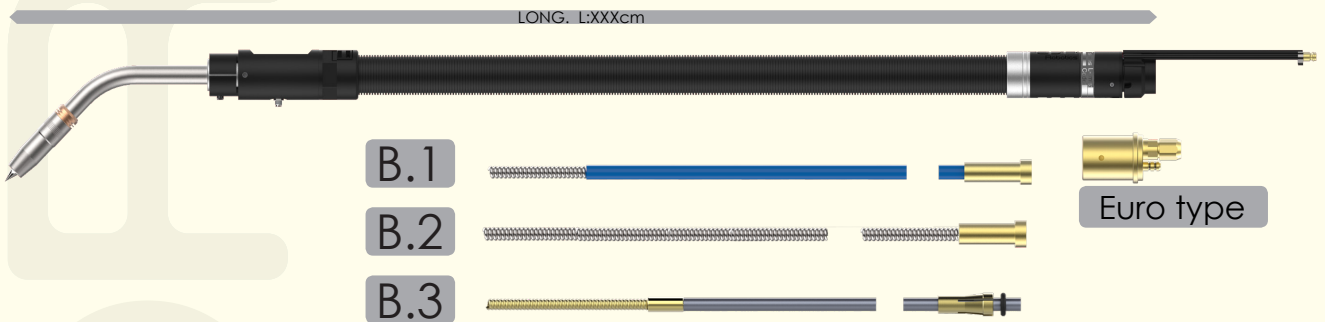


10-18 l/min

The capacity will be reduced by 35% with pulsed arc.

**STANDARD CONFIGURATION**

**A**



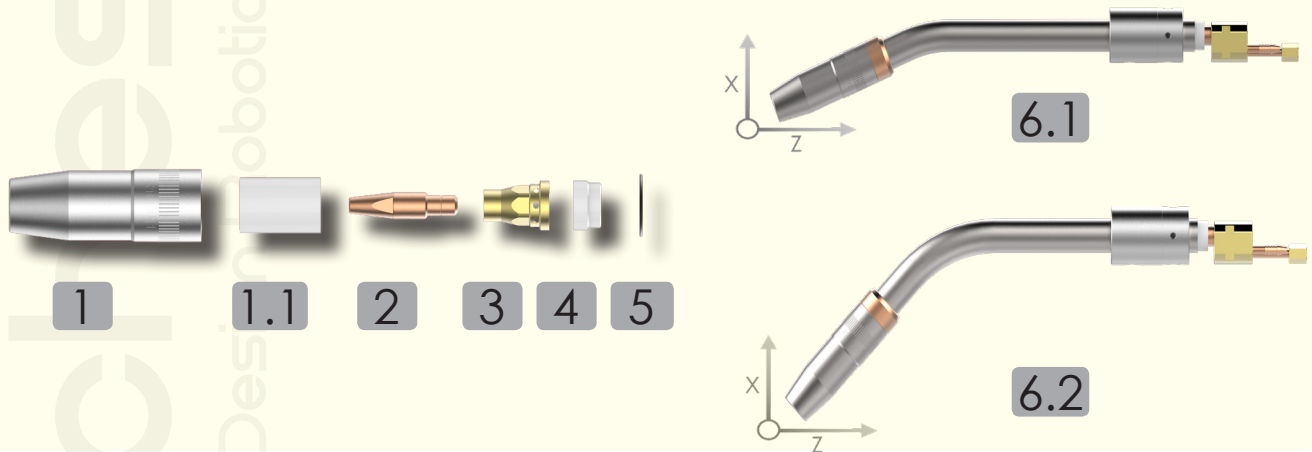
Pos.	TYPE	CODE	Min. Q.
A	Welding torch 52W-22° liquid eBASIC-Euro type	R99 1xxx 22	1
	Welding torch 52W-45° liquid eBASIC-Euro type	R99 1xxx 45	1
	Welding torch 52W-0° liquid eBASIC-Euro type	R99 1xxx 00	1
B.1	Guide blue L2600xØ4.6xØ1.5mm (0.8-1.0mm)-Euro	M99SR02B	1
	Guide blue L3600xØ4.6xØ1.5mm (0.8-1.0mm)-Euro	M99SR03B	1
	Guide blue L4600xØ4.6xØ1.5mm (0.8-1.0mm)-Euro	M99SR04B	1
B.2	Guide nude L2600xØ4.6xØ2.2mm (1.2-1.6mm)-Euro-HD	M45SR02	1
	Guide nude L3600xØ4.6xØ2.2mm (1.2-1.6mm)-Euro-HD	M45SR03	1
	Guide nude L4600xØ4.6xØ2.2mm (1.2-1.6mm)-Euro-HD	M45SR04	1
B.3	Guide for Alum L2700xØ4.5xØ2.5mm (1.2-1.6mm)-Euro	M99SA102	1
	Guide for Alum L3700xØ4.5xØ2.5mm (1.2-1.6mm)-Euro	M99SA103	1

© 2019 EDRTorches, S.L. All rights reserved. Subject to change without notice. Excerpts and reprints not permitted.

enDS-52W-01

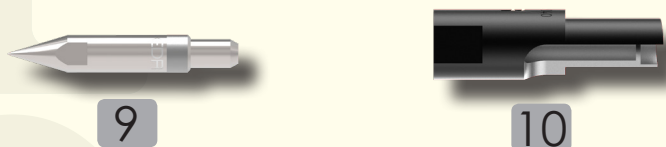


SPARE PARTS



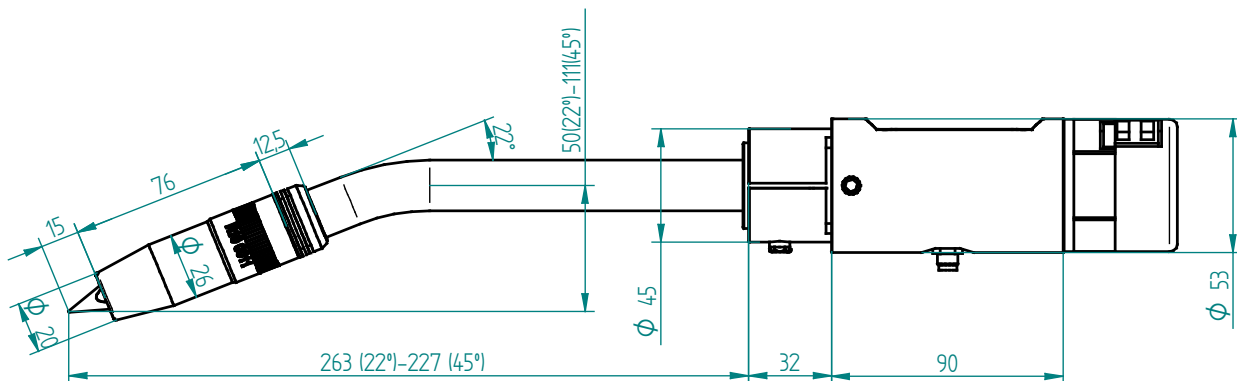
Pos.	TYPE	CODE	Min. Q.
1	Nozzle L76xØ15.5 mm	R10 0011	2
	Nozzle L76xØ13 mm	R10 0012	2
	Nozzle L79xØ15.5 mm	R10 00211	2
1.1	Insulator nozzle L35XØ19.5 mm	R10 0002	2
2	Contact tip M10 1.0 mm Cu-BICOMP	R10 0400 10	5
	Contact tip M10 1.2 mm Cu-BICOMP	R10 0400 12	5
	Contact tip M10 1.6 mm Cu-BICOMP	R10 0400 16	5
	Contact tip M10 1.0 mm CuCrZr	R10 0401 10	5
	Contact tip M10 1.2 mm CuCrZr	R10 0401 12	5
	Contact tip M10 1.6 mm CuCrZr	R10 0401 16	5
3	Diffuser L26xØ18.5 mm M10	R12 0013	2
4	Insulator neck L11XØ18.5 mm	R12 0308	2
5	Oring neck Ø23 mm	R10 0401	10
6.1	Torch neck BASIC-52W 22° (X=50 mm, Z=263 mm)	R11 5220	1
6.2	Torch neck BASIC-52W 45° (X=111 mm, Z=227 mm)	R11 5450	1

ACCESSORIES



Pos.	TYPE	CODE	Min. Q.
9	Tip TCP M10-15mm programming	R10 0115	1
10	Clining reamer TH L26xØ15x10.5mm	R03 2040	1

STANDARD MEASURES



© 2019 EDRtorches, S.L. All rights reserved. Subject to change without notice. Excerpts and reprints not permitted.